



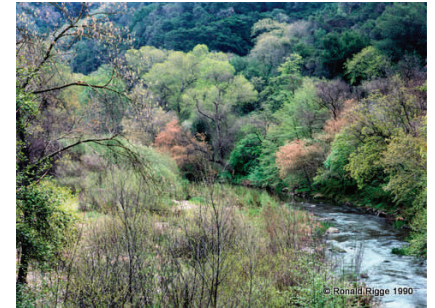
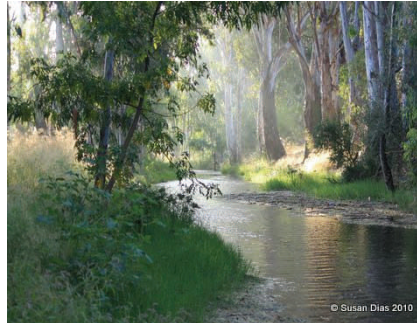
# Alameda Creek Watershed 3rd Annual Photo Contest

*Participate in the Alameda Creek Watershed Council's Photo Contest!*

Would you like to show off your talent for capturing the beauty of natural landscapes in photos?

Would you like to help bring awareness to others of the natural beauty in the East Bay's Alameda Creek watershed?

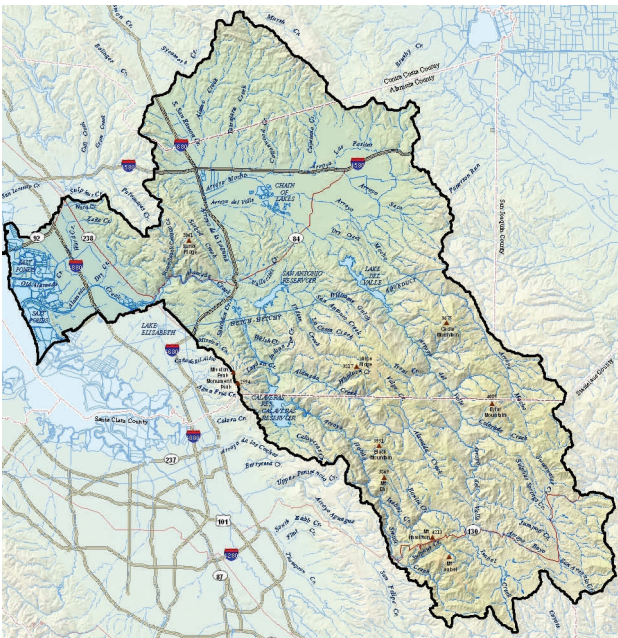
Would you like to add to see your photos on Alameda Creek Watershed Council documents and webpage?



*Susan Dias, 1st Place*

*Ronald Rigge, 2nd Place*

*2010 Photo Contest Winners*



*The Alameda Creek Watershed covers an area of approximately 700 square miles from Mt. Diablo in the North to Mt Hamilton in the south.*

Be a part of the **2011 Photo Contest!** Judging and winner recognition will take place at the Alameda Creek Watershed Council's annual conference in October and be highlighted on their webpage.

The contest is open to all ages of amateur and professional photographers. There will be both youth and adult categories. The Council is looking for photos that highlight creeks, lakes and wetlands found in the Alameda Creek Watershed.

Visit <http://www.acrcd.org/WatershedCouncil.aspx> for more details and to view the complete rules and regulations.

**Deadline for submission:  
Extended to Friday October 21st, 2011**



The Alameda Creek Watershed Council is a group of stakeholders that work to protect and enhance the watershed's natural resources. The Council holds bi-monthly meetings and visitors are always welcome! Visit the Council's webpage for more information.

Funding provided by the Alameda County Flood Control and Water Conservation District with support from the Alameda County Resource Conservation District and USDA Natural Resources Conservation Service.

